

KINGSPAN LIGHT & AIR FENESTRATION

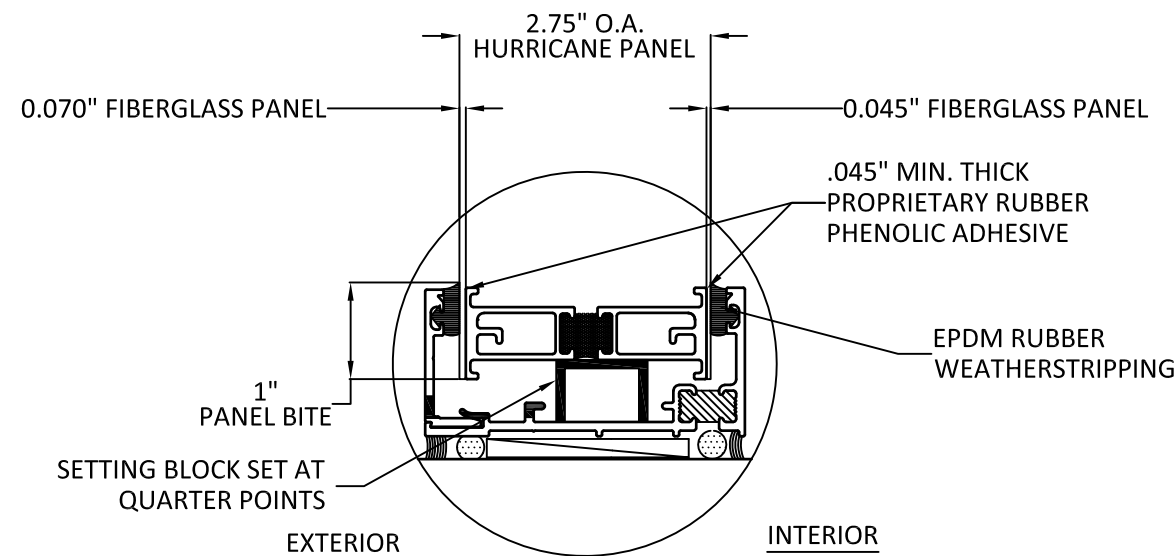
GRIDSPAN® FIBERGLASS ROOF SYSTEM TB/NON-TB (NON-HVHZ) (IMPACT)

GENERAL NOTES:

- THE PRODUCT SHOWN HEREIN IS DESIGNED AND MANUFACTURED TO COMPLY WITH THE CURRENT EDITION FLORIDA BUILDING CODE (FBC), **EXCLUDING** HVHZ, AND HAS BEEN EVALUATED ACCORDING TO THE FOLLOWING:
 - ASTM E283-04(12)
 - ASTM E331-00(16)
 - ASTM E330-14
 - ASTM E1886-13a
 - ASTM E1996-14a
- ADEQUACY OF THE EXISTING STRUCTURAL METAL FRAMING AS A MAIN WIND FORCE RESISTING SYSTEM CAPABLE OF WITHSTANDING AND TRANSFERRING APPLIED PRODUCT LOADS TO THE FOUNDATION IS THE RESPONSABILITY OF THE ENGINEER OR ARCHITECT OF RECORD FOR THE PROJECT OF INSTALLATION.
- APPROVED IMPACT PROTECTIVE SYSTEM **IS NOT REQUIRED** TO PROTECT THIS PRODUCT IN AREAS REQUIRING IMPACT RESISTANCE IN WZ3 OR LESS.
- APPROVED IMPACT PROTECTIVE SYSTEM **IS REQUIRED** TO PROTECT THIS PRODUCT IN AREAS REQUIRING IMPACT RESISTANCE WZ4.
- MAX. DESIGN PRESSURE APPLIES TO ASSEMBLIES SUCH THAT PURLIN SPACING AND PANEL UNSUPPORTED DISTANCE ARE NOT EXCEEDED AS SHOWN HEREIN.
- STRUCTURAL ADEQUACY OF SUPPORTING SUBSTRUCTURE IS NOT PART OF THIS APPROVAL AND SHALL BE REVIEWED BY THE AUTHORITY HAVING JURISDICTION.
- STRUCTURAL ADEQUACY OF SUPPORTING SUBSTRUCTURE IS NOT PART OF THIS APPROVAL AND SHALL BE REVIEWED BY THE AUTHORITY HAVING JURISDICTION.
- ALL ALUMINUM PARTS ARE 6063-T6 ALLOY.
- DISSIMILAR MATERIAL IN CONTACT SHALL MEET FBC REQUIREMENTS.
- PER FBC SECTION 2405.4: SKYLIGHTS SET AT AN ANGLE OF LESS THAN 45° FROM THE HORIZONTAL PLANE SHALL BE MOUNTED AT LEAST 4" ABOVE THE PLANE OF THE ROOF ON A CURB. INSTALLATION WITHOUT A CURB SHALL BE PERMITTED ON ROOFS WITH A MINIMUM SLOPE OF 14 DEGREES (3:12 SLOPE) IN GROUP R-3 OCCUPANCIES. ALL SKYLIGHTS INSTALLED IN A ROOF WITH A PITCH FLATTER THAN 14 DEGREES SHALL BE MOUNTED AT LEAST 4" ABOVE THE PLANE OF THE ROOF.

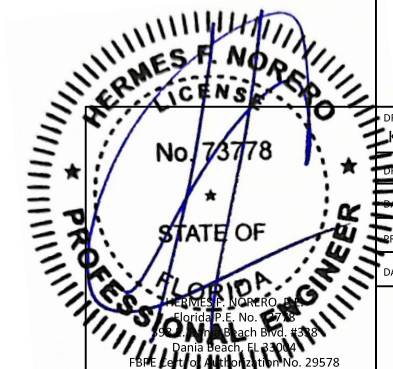
DESIGN PRESSURE	
ASTM E330	DESIGNED RATING: ±65 PSF TESTED LOAD: +195/-130 PSF
ASTM E1886 & E1996	MISSILE LEVEL D CYCLIC PRESSURE: ±65 PSF
ASTM 283	±6.24 PSF - 0.04 CFM/FT ²
ASTM 331	+ 15 PSF
DEADLOAD	3 PSF

TABLE OF CONTENTS	
1	GENERAL NOTES
2	CONFIGURATION
3	DETAILS 1, 2 AND 3
4	MULLION CONNECTIONS]
5	ANCHORS
6	COMPONENTS



PANEL DETAIL

PANEL CONFIGURATION:
 EXTERIOR SURFACE: 0.070" FIBERGLASS PANEL
 INTERIOR SURFACE: 0.045" FIBERGLASS PANEL
 NOMINAL GRID SIZE: 12" X 20"
 MAXIMUM 1279 SPAN: 60"

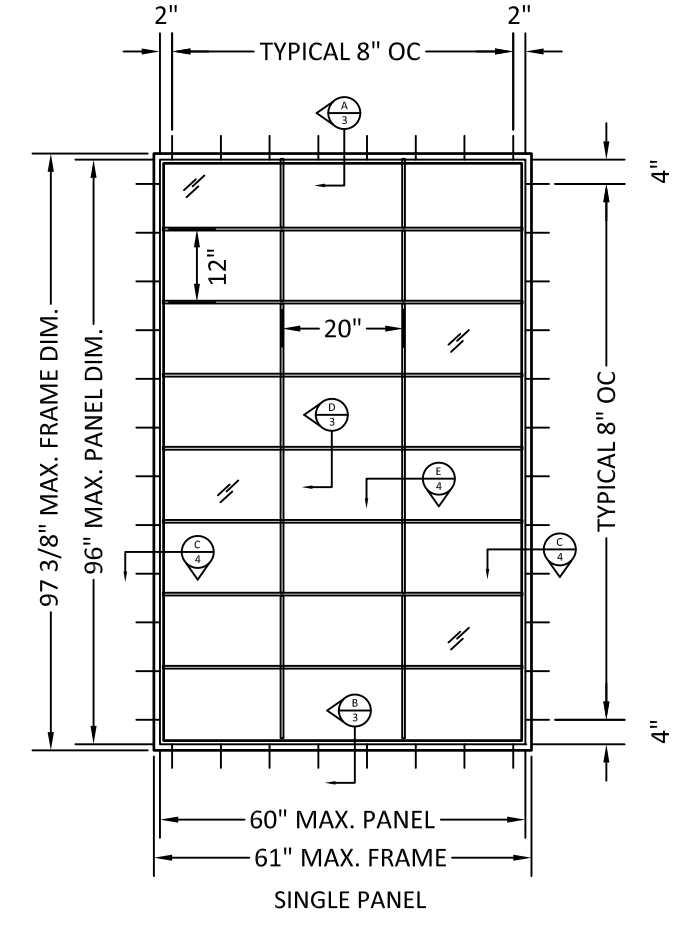
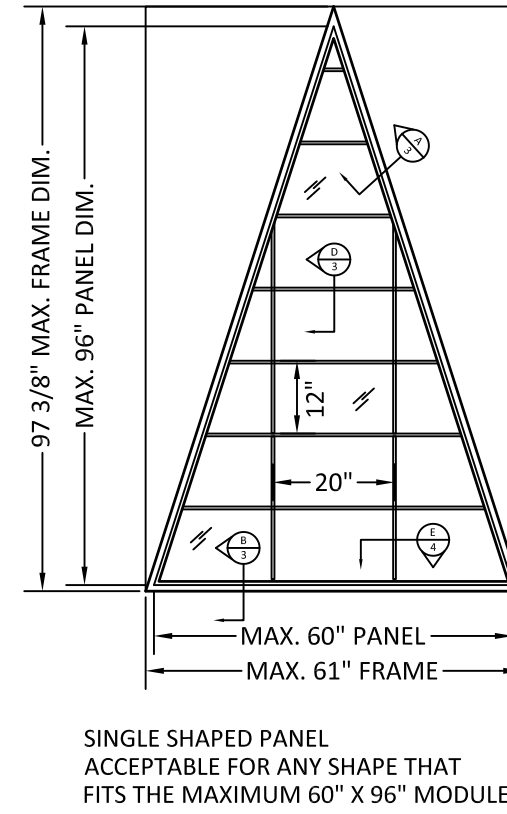
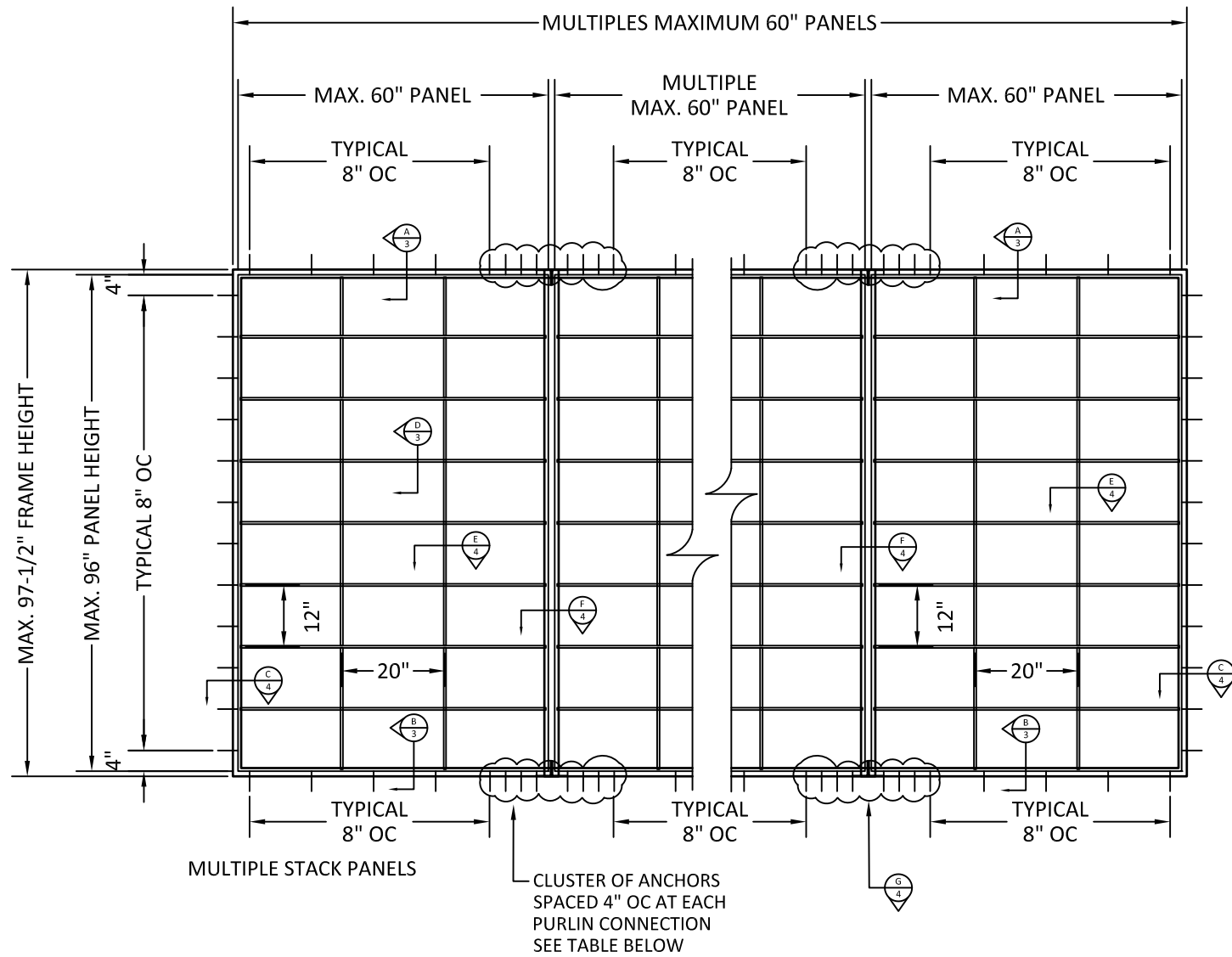


REV.	DESCRIPTION	DATE

PROJECT:	GRIDSPAN® FIBERGLASS ROOF SYSTEM TB/NON-TB (NON-HVHZ) (IMPACT)
ARCHITECT:	SKYLIGHT/SLOPED APPLICATION
CUSTOMER:	
CONTRACTOR:	
DRAWING NO.:	KLA011
REV.:	
DRAWN BY:	DKI
DATE:	07/10/23
PROJECT MGR:	
DATE:	
SHEET NO.:	1 OF 6

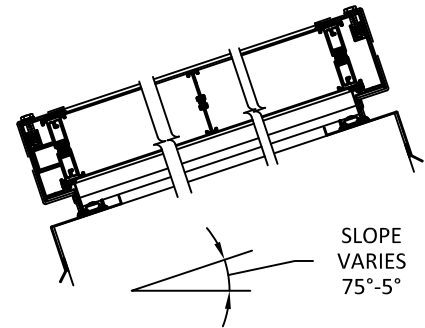


TYPICAL CONFIGURATIONS



ANCHOR TYPE	A	B	C	D
PANEL WIDTH (IN)	60	60	60	60
PANEL HEIGHT (IN)	96	96	96	96
MINIMUM # OF CLUSTER ANCHORS	8	10	8	8

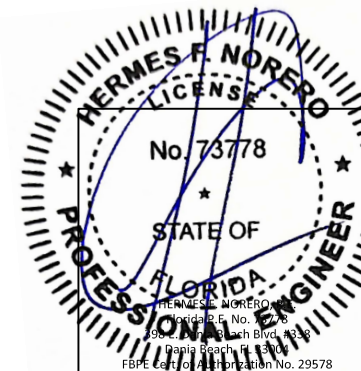
EXAMPLE:
MODULE 60" X 96" PANEL
ANCHOR TYPE B IT WILL
REQUIRE 10 ANCHORS
IN CLUSTER OF 4" OC
AT 65 PSF RATING




THIS PRODUCT CAN BE USED AS A UNIT SKYLIGHT OR
DESIGNED TO FORM ESSENTIALLY THE ENTIRE ROOF

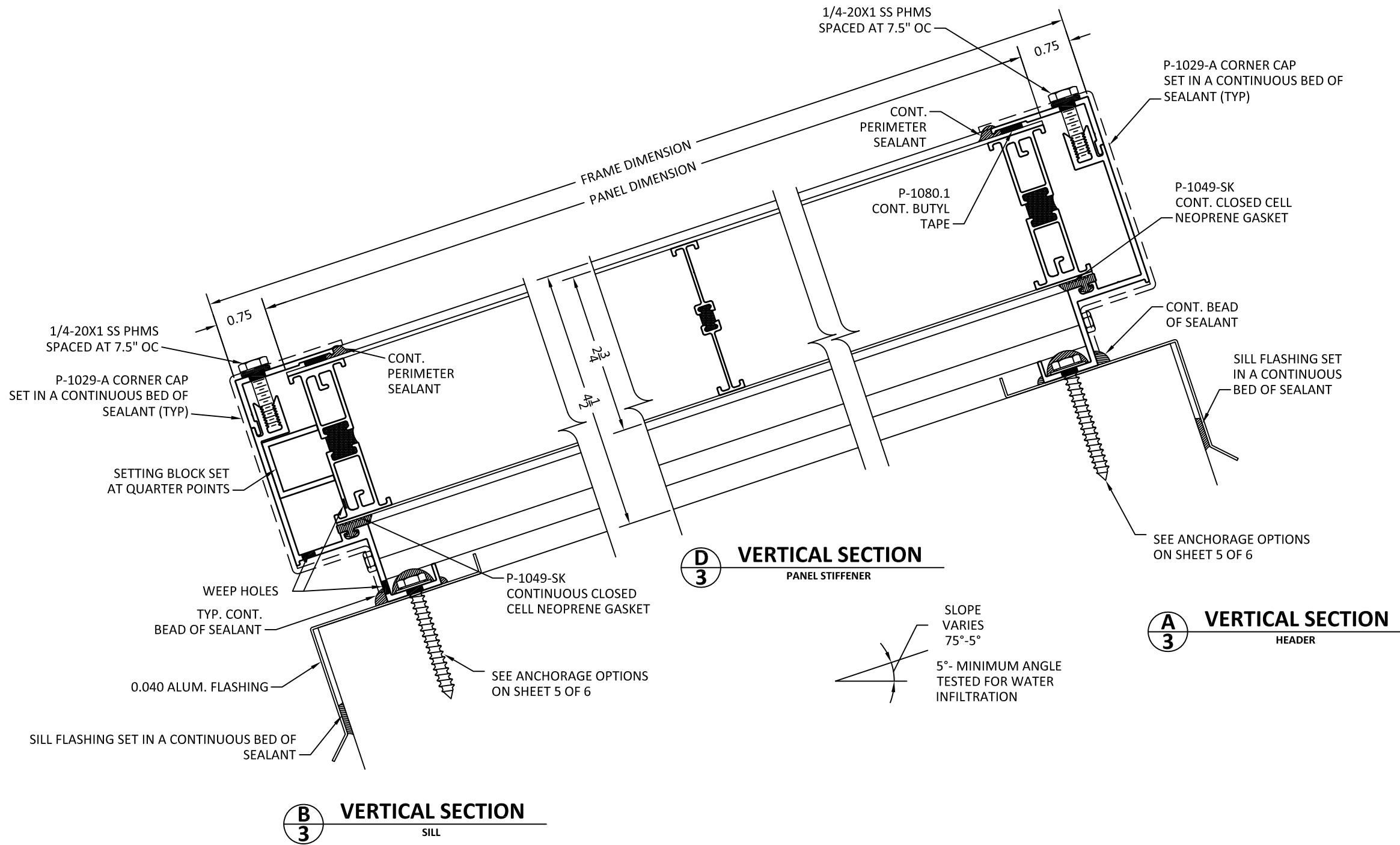
ANCHOR OPTIONS		
A	1/4" SS ITW TAPCON	1-1/4" EMBED. INTO 3000 PSI CONCRETE
B	1/4" SS ITW TAPCON	1-1/4" EMBED. INTO MASONRY PER ASTM C90
C	1/4" SS ITW TAPCON OR 1/4" SS SMS	1-1/2" EMBED. INTO MIN. 2X WOOD BUCK
D	1/4" SS SMS	3 THREADS PAST MIN. 1/8" METAL (6063-T5 ALUM. ASTM A36 STEEL)

ANCHORAGE NOTES:
1- PERIMETER FRAMING WITH TYPE A, B, C OR D ANCHORAGE OPTIONS.
2- SEE ELEVATIONS FOR ANCHORAGE LAY-OUT AND SPACING.



DATE	
DESCRIPTION	
REV.	
 <small>28652 N. BALLARD DR. • LAKE FOREST, IL 60045 • (847) 816-1060 • FAX (847) 816-0425</small>	
PROJECT:	GRIDSPAN® FIBERGLASS ROOF SYSTEM TB/NON-TB (NON-HVHZ) (IMPACT)
ARCHITECT:	SKYLIGHT/SLOPED APPLICATION
CUSTOMER:	
CONTRACTOR:	
DRAWING NO.	KLA011
DATE	07/10/23
PROJECT MGR	
DATE	
SHEET NO.	2 OF 6

DETAILS

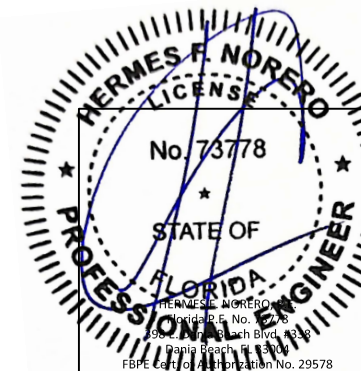


REV.	DESCRIPTION	DATE

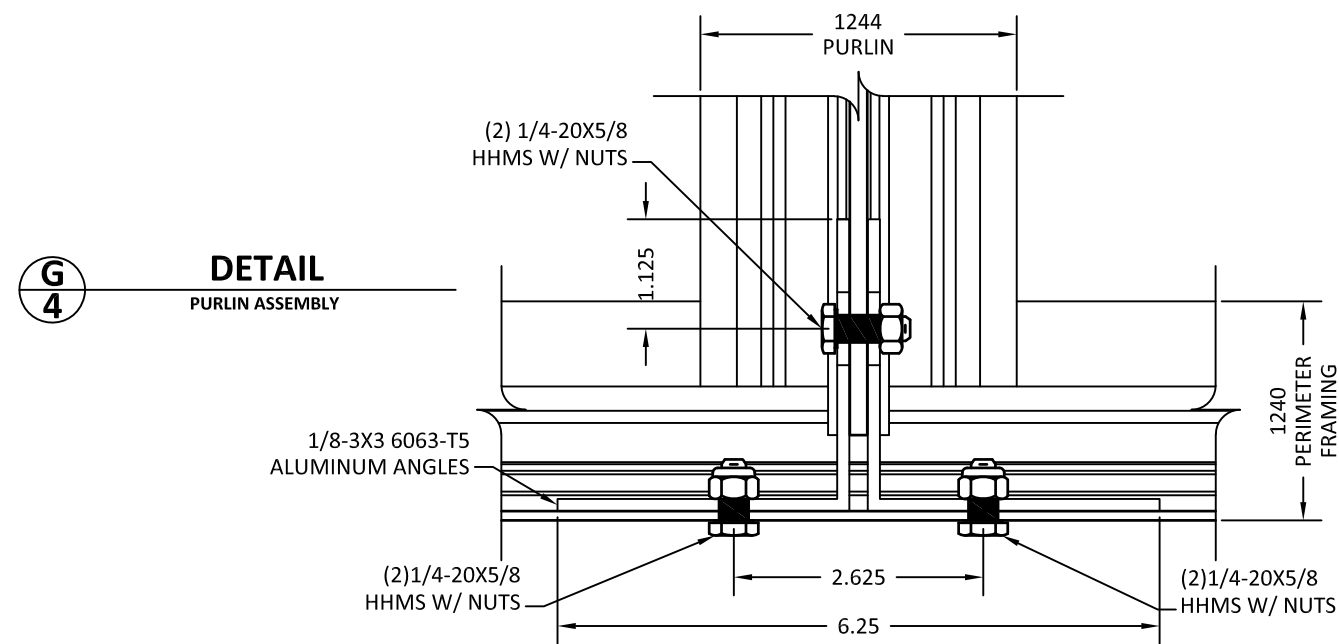
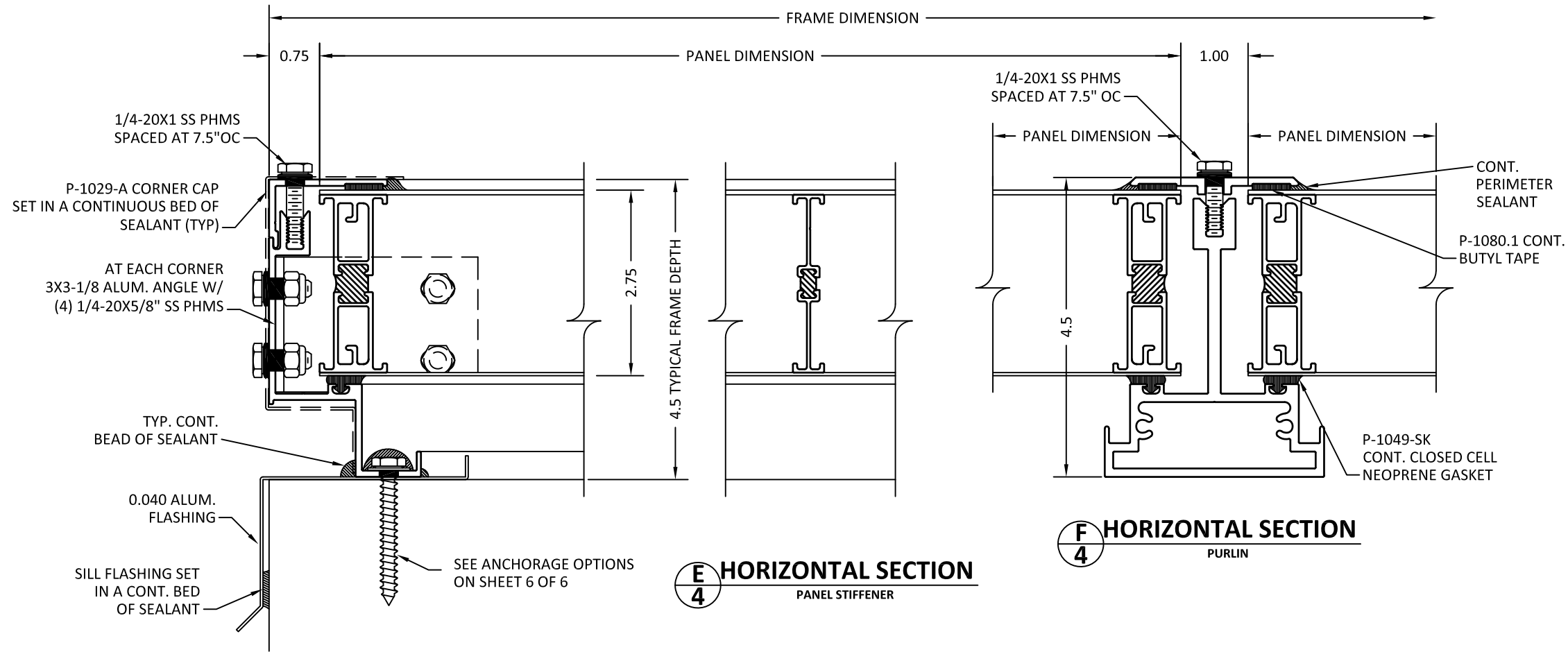

 28662 N. BALLARD DR. LAKE FOREST, IL 60045 • (847) 816-1060 • FAX (847) 816-0425

PROJECT:	GRIDSPAN® FIBERGLASS ROOF SYSTEM TB/NON-TB (NON-HVHZ) (IMPACT)
ARCHITECT:	SKYLIGHT/SLOPED APPLICATION
CUSTOMER:	PHONE #:
CONTRACTOR:	PHONE #:

DRAWING NO.	KLA011
REV.	
DRAWN BY	DER
DATE	07/10/23
PROJECT MGR	
DATE	
SHEET NO.	3 OF 6



DETAILS

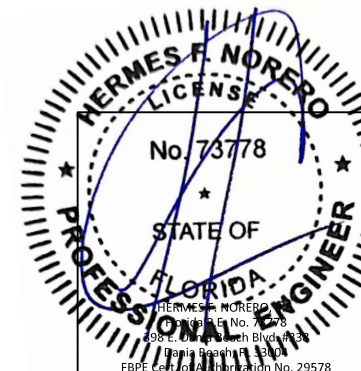


REV.	DESCRIPTION	DATE

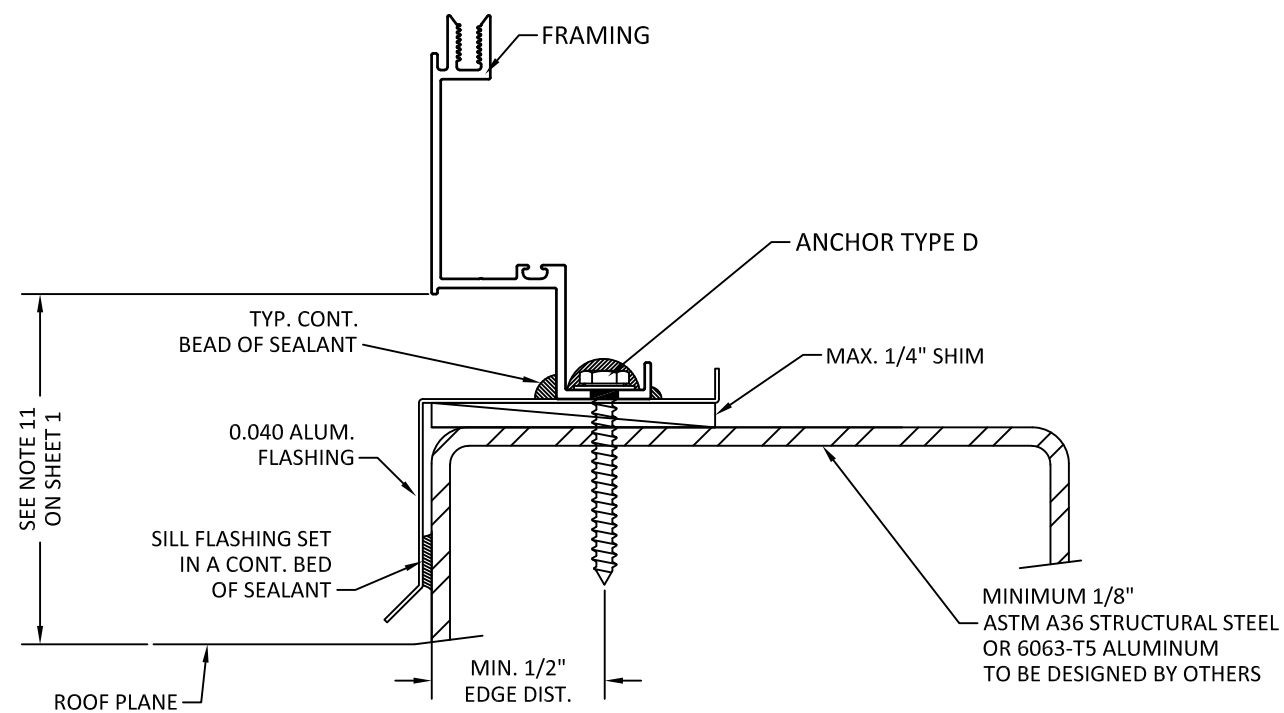
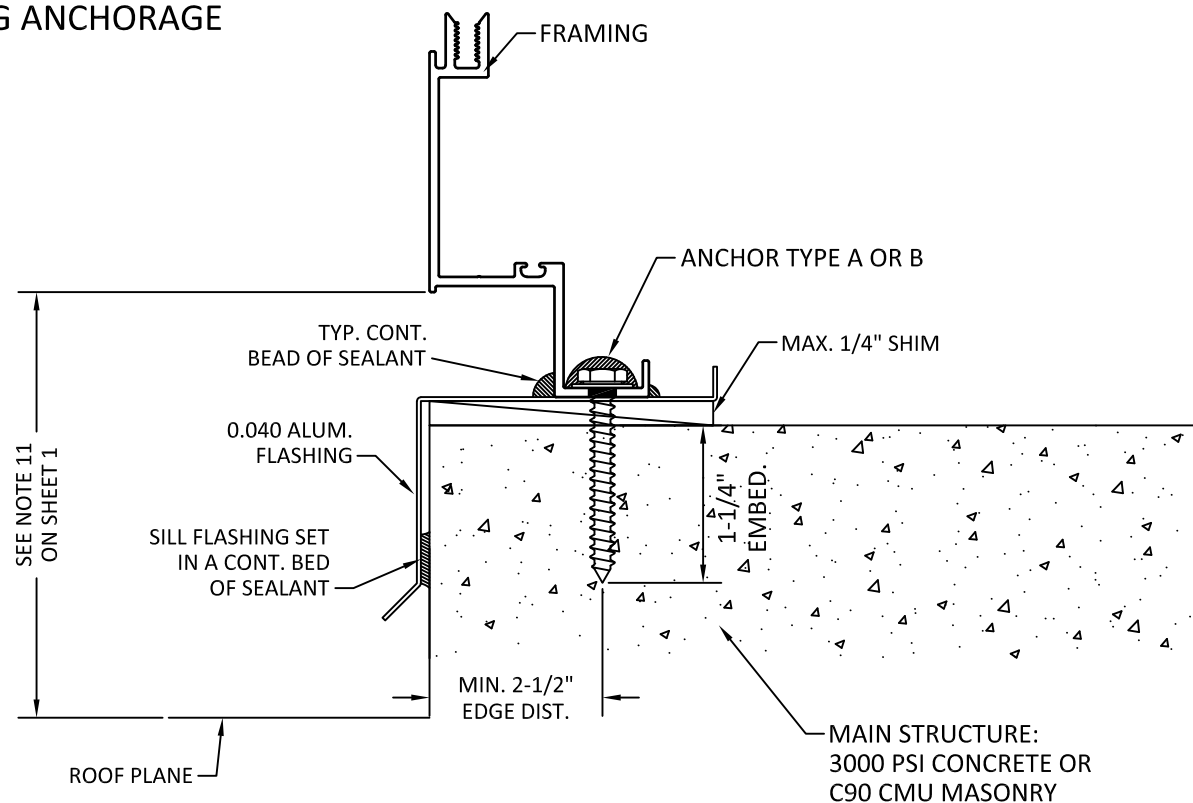
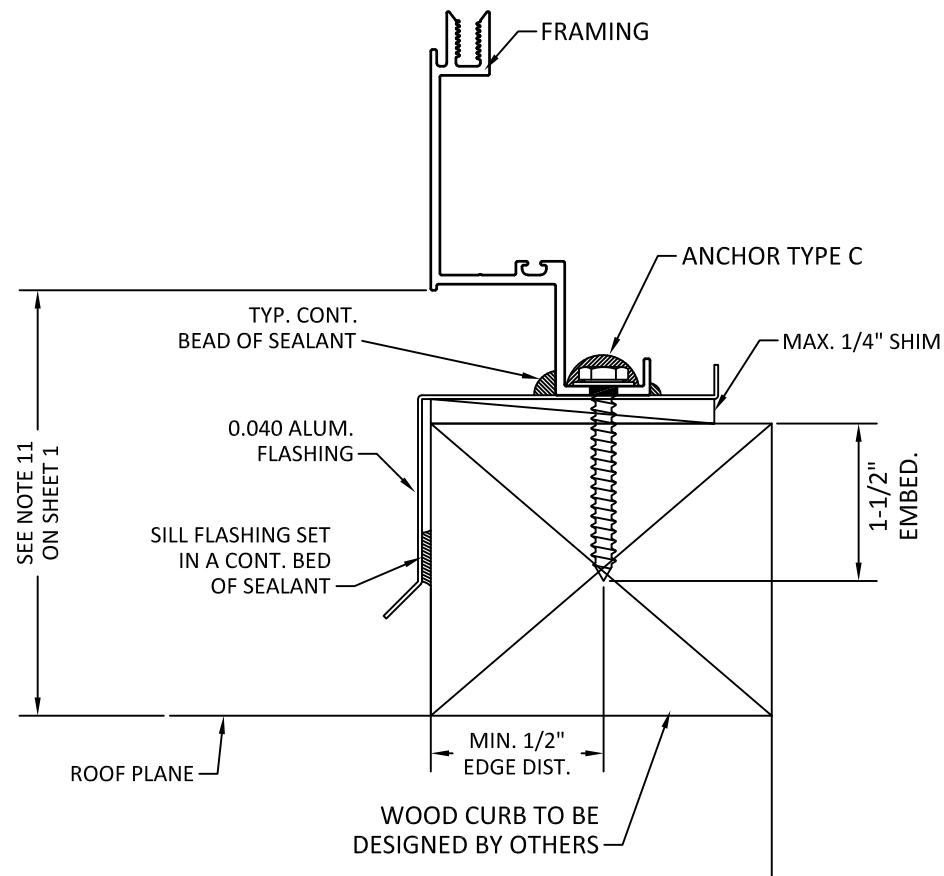
Kingspan
Light Air

28662 N. BALLARD DR. LAKE FOREST, IL 60045 | (847) 816-1000 • FAX (847) 816-0425

PROJECT:	GRIDSPAN® FIBERGLASS ROOF SYSTEM TB/NON-TB (NON-HVHZ) (IMPACT)
ARCHITECT:	SKYLIGHT/SLOPED APPLICATION
CUSTOMER:	
CONTRACTOR:	
DRAWING NO.:	KLA011
DRAWN BY:	DER
DATE:	07/10/23
PROJECT MGR:	
DATE:	
SHEET NO.:	4 OF 6




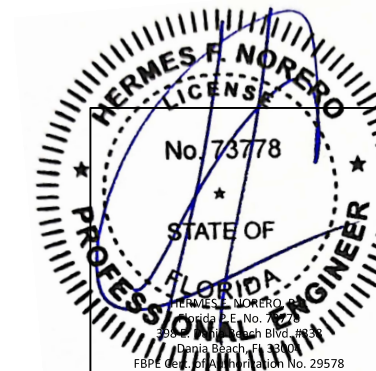
FRAMING ANCHORAGE



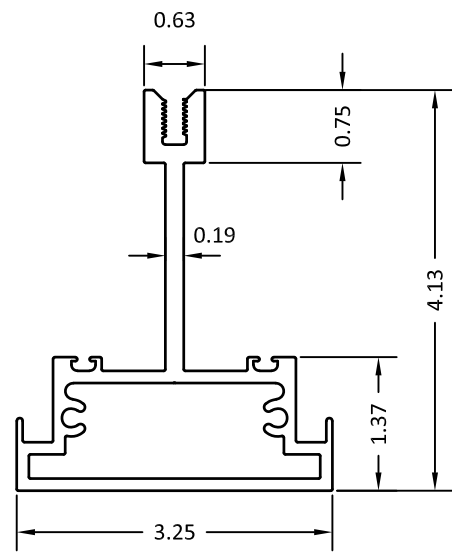
ANCHOR OPTIONS		
A	1/4" SS ITW TAPCON	1-1/4" EMBED. INTO 3000 PSI CONCRETE
B	1/4" SS ITW TAPCON	1-1/4" EMBED. INTO MASONRY
C	1/4" SS ITW TAPCON OR 1/4" SS SMS	1-1/2" EMBED. INTO MIN. 2X WOOD BUCK
D	1/4" SS SMS	3 THREADS PAST MIN. 1/8" METAL (6063-T5 ALUM. ASTM A36 STEEL)

ANCHORAGE NOTES:
 1- PERIMETER FRAMING WITH TYPE A, B, C OR D ANCHORAGE OPTIONS.
 2- SEE ELEVATIONS FOR ANCHORAGE LAY-OUT AND SPACING.

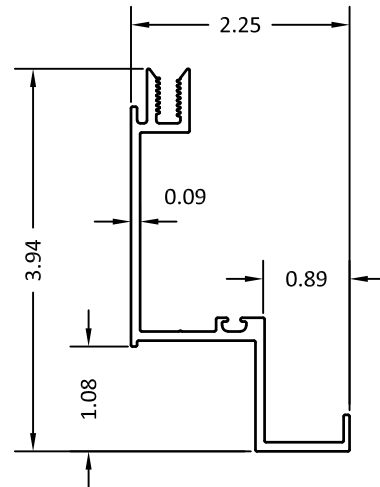
DATE	
DESCRIPTION	
REV.	
 28662 N. BALLARD DR. LAKE FOREST, IL 60045 • (847) 845-1000 • FAX (847) 845-0425	
PROJECT:	GRIDSPAN® FIBERGLASS ROOF SYSTEM TB/NON-TB (NON-HVHZ) (IMPACT)
ARCHITECT:	SKYLIGHT/SLOPED APPLICATION
CUSTOMER:	PHONE #:
CONTRACTOR:	PHONE #:
DRAWING NO.:	KLA011
DESIGNED BY:	DER
DATE:	07/10/23
PROJECT MGR:	
DATE:	
SHEET NO.:	5 OF 6



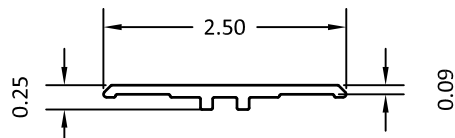
FRAMING COMPONENTS



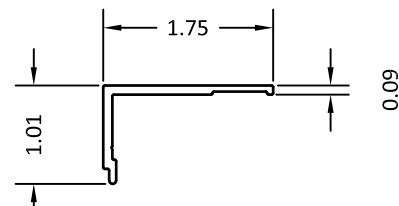
1244 PURLIN
6063-T6 ALUMINUM ALLOY



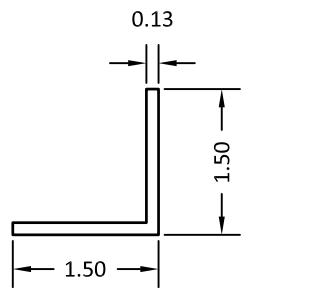
1240 PERIMETER FRAMING
6063-T6 ALUMINUM ALLOY



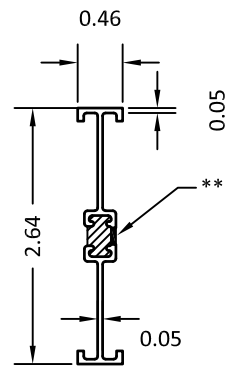
1225 PURLIN PRESSURE BAR
6063-T6 ALUMINUM ALLOY



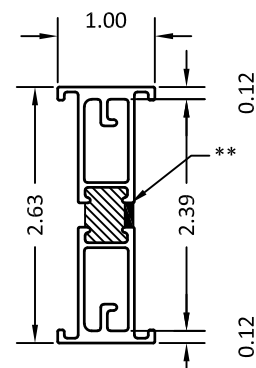
1291 SNAP PANEL STOP
6063-T6 ALUMINUM ALLOY



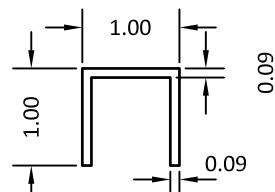
P1108 FRAMING CORNER KEY
6063-T6 ALUMINUM ALLOY
1.5" LONG



1279 STIFFENER I BEAM
6005-T5 ALUMINUM ALLOY



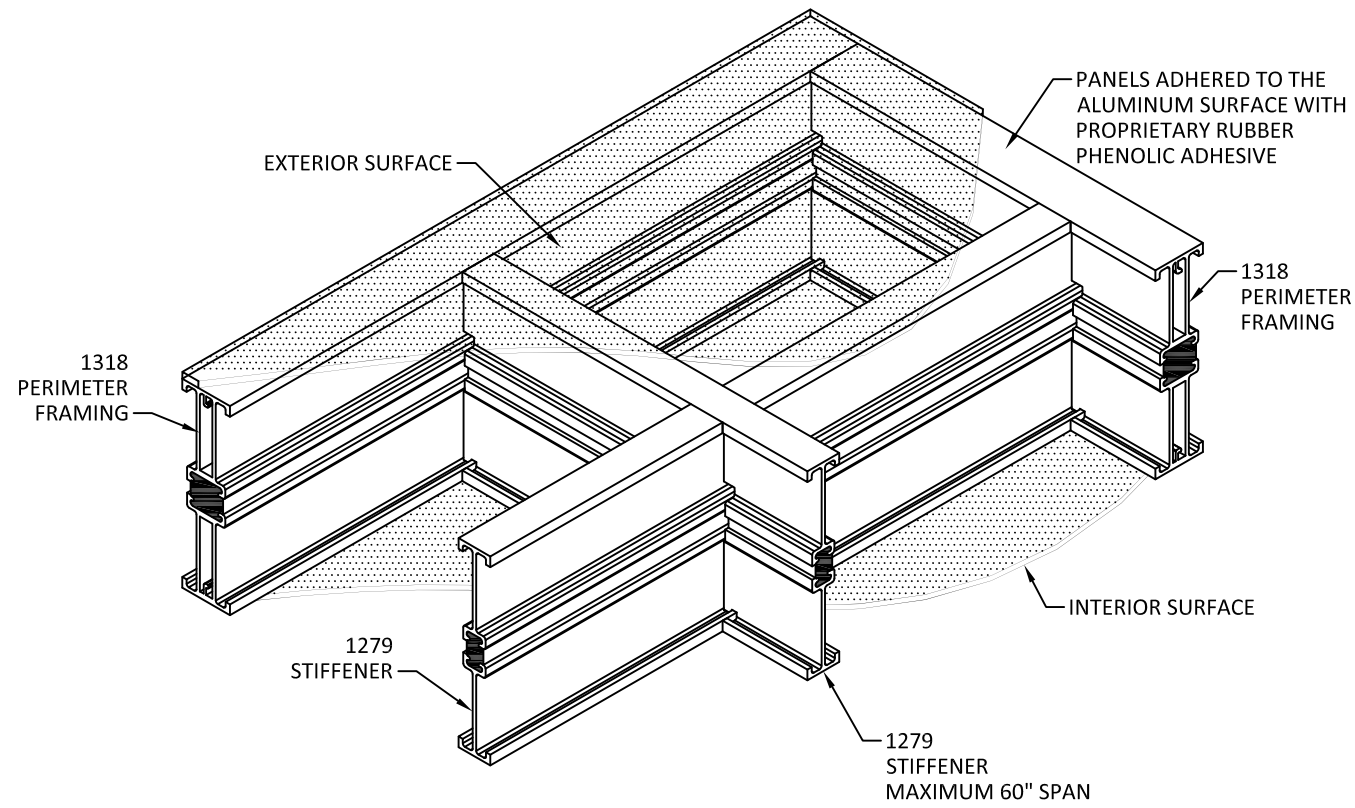
1318 PERIMETER I BEAM
6005-T5 ALUMINUM ALLOY



PVC SETTING BLOCK

** ALTERNATE NON THERMALLY BROKEN SYSTEM CAN BE USE IF BRIDGE REMAINS

PANEL COMPONENTS

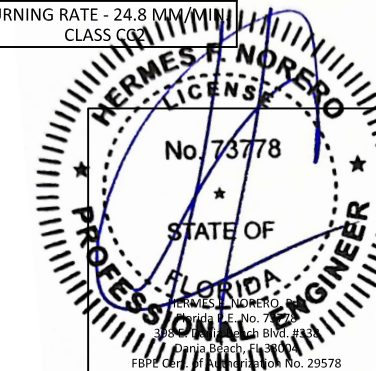


BASIC MODULAR PANEL ASSEMBLY

PANEL CONFIGURATION:
EXTERIOR SURFACE: 0.070" FIBERGLASS PANEL
INTERIOR SURFACE: 0.045" FIBERGLASS PANEL
NOMINAL GRID SIZE: 12" X 20"
MAXIMUM 1279 SPAN: 60"

INTERIOR SURFACE PANEL	
0.045 FRCW STANDARD FIRE RATED TRANSLUCENT FIBERGLASS SHEET	
ASTM E84	FLAME SPREAD INDEX - 20 SMOKE DEVELOPED INDEX - 150 (<=450 FBC 2606.4)
ASTM D1929	SELF IGNITION - 912 °F (>=650 FBC 2606.4) FLASH IGNITION - 872 °F
ASTM D635	CLASS CC1

EXTERIOR SURFACE PANEL	
0.070 STCWW ULTIMATE SERIES HIGH IMPACT TRANSLUCENT FIBERGLASS SHEET	
ASTM E84	FLAME SPREAD INDEX - 170 SMOKE DEVELOPED INDEX - 350 (<=450 FBC 2606.4)
ASTM D1929	SELF IGNITION - 860 °F (>=650 FBC 2606.4) FLASH IGNITION - 752 °F
ASTM D635	BURNING RATE - 24.8 MM/MIN CLASS CC1



REV.	DESCRIPTION	DATE

PROJECT:	GRIDSPAN® FIBERGLASS ROOF SYSTEM TB/NON-TB (NON-HVHZ) (IMPACT)
ARCHITECT:	SKYLIGHT/SLOPED APPLICATION
CUSTOMER:	
CONTRACTOR:	

DRAWING NO.	KLA011
DRAWN BY	DER
DATE	07/10/23
PROJECT MGR	
DATE	

SHEET NO.	6 OF 6
-----------	--------

